



**Binary.com**  
*Sharp Prices. Smart Trading.*

**BINARY INVESTMENTS (EUROPE) LTD**

**The Third Pillar: Market Discipline Report**

# CONTENTS

<b>Contents</b> .....	<b>1</b>
1. Index of Tables.....	3
2. Disclosure Map .....	4
<b>1. Introduction</b> .....	<b>12</b>
<b>2. Scope of Application</b> .....	<b>13</b>
<b>3. Reporting Location</b> .....	<b>14</b>
<b>4. Capital Adequacy</b> .....	<b>15</b>
4.1 Capital Adequacy Approach .....	15
4.2 Regulatory Capital Ratios.....	15
4.3 Return on Assets.....	16
4.4 Risk Weighted Assets .....	16
<b>5. Risk Management Objectives and Policies</b> .....	<b>17</b>
5.1 Risk Management Strategy .....	17
5.2 Risk Management Policy.....	17
5.3 Risk Management Processes and Objectives.....	17
5.4 General Conduct of Business.....	18
5.5 Board Declaration – Adequacy of Risk Management Arrangements .....	18
5.6 Concise Risk Statement .....	18
5.7 Governance Arrangement .....	18
5.7.1 Governance and Oversight.....	18
5.7.2 Members of the Board of Directors .....	19
5.7.3 Recruitment Policy of Members of the Board of Directors.....	19
5.7.4 Policy on Diversity of the Board of Directors .....	20
5.7.5 Risk Management Function .....	20
5.7.6 Risk Management Working Group.....	22
<b>6. Own Funds</b> .....	<b>23</b>
<b>7. Risk Components</b> .....	<b>28</b>
7.1 Credit/Counterparty Risk Components .....	28
7.2.1 Exposures by average exposure amount over the period broken down by different type of exposure classes .....	29

7.2.2 Exposures post value adjustments by industry and exposure class .....	30
7.2.3 Exposures post value adjustments by significant geographic area and material exposure class .....	32
7.2.4 Exposures post value adjustments by residual maturity and by material exposure class.....	33
7.3 Market Risk Analysis .....	34
7.3.1 Foreign Currency Risk.....	34
7.3.2 Interest Rate Risk.....	34
7.4 Liquidity Risk.....	34
7.5 Large Exposure Risk Components.....	34
7.6 Commodities Risk Components .....	35
7.7 Operational Risk Components.....	35
7.8 Credit Valuation Adjustment Risk .....	35
7.9 Free Deliveries.....	35
7.10 Compliance Risk .....	36
7.11 Insurance Covers.....	36
7.12 Trading Book Risk Components.....	36
7.12.1 Position Risk.....	36
7.12.2 Counterparty Credit Risk .....	36
7.12.3 Settlement Risk .....	37
<b>8. Remuneration policy and practices .....</b>	<b>38</b>
8.1 Remuneration Guiding Principles .....	38
8.2 Performance Appraisal.....	38
8.3 Directors' Remuneration.....	38
<b>9. Leverage.....</b>	<b>40</b>
9.1 Leverage Ratios .....	40
9.2 Reconciliation of leverage ratio .....	40

## 1. Index of Tables

Table 1.	Disclosure Requirement: Mapping of Regulation (EU) 575/2013 to Pillar 3 Report Reference
Table 2.	Regulatory Capital ratios
Table 3.	Return on assets
Table 4.	Minimum capital requirements and risk weighted assets for credit/counterparty risk, foreign exchange risk, and operational risk
Table 5.	Regulatory capital
Table 6.	Reconciliation of balance sheet to regulatory capital
Table 7.	Terms and conditions of share equity
Table 8.	Terms and conditions of subordinated loan
Table 9.	Credit/Counterparty exposure analysis by exposure class
Table 10.	Average Credit/Counterparty exposure
Table 11.	Industry analysis of Credit/Counterparty exposure
Table 12.	Geographical analysis of Credit/Counterparty exposure
Table 13.	Residual maturity analysis of Credit/Counterparty exposure
Table 14.	Remuneration analysis by senior management and members of staff
Table 15.	Remuneration analysis by business area
Table 16.	Leverage ratio
Table 17.	Reconciliation of balance sheet to leverage ratio exposure

## 2. Disclosure Map

Table 1. Disclosure Requirement: Mapping of Capital Requirements Regulation (“CRR/Regulation (EU) No. 575/2013”) to The Third Pillar: Market Discipline Report Reference

Pillar Requirement	<sup>3</sup> Description	Report Section Reference	Regulation (EU) 575/2013 Article Reference
<b>Disclosures Applicable</b>			
Scope of Disclosure Requirements	Public disclosure requirement	2	431(1)
	Permission granted by competent authorities for certain instruments and methodologies shall be subject to public disclosure	2	431(2)
	Adoption of formal policy on compliance with disclosure requirement	2	431(3)
	Explanation of rating decisions	N/A	431(4)
Frequency of Disclosure	Annual publication of disclosures	2	433
Means of Disclosure	Appropriateness of medium, location and means of verification	2	434(1)
	Equivalent disclosures	2	434(2)
Risk Management Objectives and Policies	Strategies and processes	5.1, 5.2	435(1)(a)
	Structure and organisation of risk management function	5.6.4	435(1)(b)
	Scope and nature of risk reporting and measurement systems	5.1, 5.2	435(1)(c)
	Policies, strategies and processes for hedging and mitigating risk	5.1, 5.2	435(1)(d)
	Board approved declaration on adequacy of risk management arrangements	5.5	435(1)(e)

	Board approved concise risk statement	5.6	435(1)(f)
	Governance – Number of directorships held by Board members	5.7.2	435(2)(a)
	Governance – Board recruitment policy	5.7.3	435(2)(b)
	Governance – Board diversity policy	5.7.4	435(2)(c)
	Governance – Risk Management Working Group	5.7.6	435(2)(d)
	Governance – Risk information flow to Board of Directors	5.7.5	435(2)(e)
Scope of Application	Name of institution	1, 3	436(a)
	Basis of consolidation	N/A	436(b)(i) – (iv)
	Impediment on prompt transfer of own funds or repayment of liabilities	N/A	436(c)
	Shortfall in own funds in all subsidiaries	N/A	436(d)
	Circumstances making use of “Derogation to the application of prudential requirements on an individual basis” and “Individual consolidation method”	N/A	436(e)
Own Funds	Full reconciliation of components of own funds to audited balance sheet	6	437(1)(a)
	Description of main features of components of own funds	6	437(1)(b)
	Terms and conditions of components of own funds	6	437(1)(c)
	Nature and amounts of each prudential filter pursuant to Articles 32 to 35	N/A	437(1)(d)(i)
	Nature and amounts of each deduction made pursuant to Articles 36,56 and 66	6	437(1)(d)(ii)
	Nature and amounts of items not deducted in accordance with Articles 47, 48, 56, 66 and 79	N/A	437(1)(d)(iii)

	Description of applied restrictions	N/A	437(1)(e)
	Explanation of basis of calculation of capital ratios	N/A	437(1)(f)
	Development and submission of draft implementing technical standards by EBA for 6 points (a), (b), (d), and (e) above	6	437(2)
Capital Requirements	Summary approach of capital adequacy assessment	4.1	438(a)
	Upon demand from the relevant competent authority, the result of capital adequacy assessment	N/A	438(b)
	8% of the risk-weighted exposure amounts for each of the exposure classes (for institutions calculating the risk-weighted exposure amounts in accordance with the Standardised Approach)	7.1	438(c)
	8% of the risk-weighted exposure amounts for each of the exposure classes (for institutions calculating the risk-weighted exposure amounts in accordance with Internal Ratings Based Approach)	N/A	438(d)(i) – (iv)
	Own funds requirements for market risk or settlement risk, or large exposures where they exceed limits	4.4	438(e)
	Own funds requirements calculated in accordance with the Standardised Approach, Internal Ratings Based Approach, and Advanced Measurement Approach	4.4	438(f)
Credit Risk Adjustments	Definitions for accounting purposes of “past due” and “impaired”	7.2	442(a)
	Description of approaches and methods adopted for determining specific and general credit risk adjustments	N/A	442(b)
	Exposures (before applying Credit Risk Mitigation and after accounting offsets) by	7.2.1	442(c)

	average exposure amount over the period broken down by different type of exposure classes		
	Exposures by significant geographic areas and material exposure classes	7.2.2	442(d)
	Exposures by industry or counterparty type, broken down by exposure classes	7.2.3	442(e)
	Exposures by residual maturity, broken down by exposure classes	7.2.4	442(f)
	Amount of impaired exposures and past due exposures; specific and general credit risk adjustments; and charges for specific and general credit risk adjustments, by significant industry or counterparty type	N/A	442(g)(i) – (iii)
	Amount of impaired exposures and past due exposures, by significant geographical areas including, specific and general credit risk adjustments related to each geographical area	N/A	442(h)
	Reconciliation of changes in specific and general credit risk adjustments for impaired exposures, comprised of:	N/A	442(i)
	Description of type of specific and general credit risk adjustments	N/A	442(i)(i)
	Opening balances	N/A	442(i)(ii)
	Amounts taken against the credit risk adjustments	N/A	442(i)(iii)
	Amounts set aside or reversed for estimated probable losses on exposures, and any other adjustments	N/A	442(i)(iv)
	Closing balances	N/A	442(i)(v)
Exposure to Market Risk	Position risk, large exposures exceeding limits, FX, settlement and commodities risk	4.4, 7.12	7.3, 445
Operational Risk	Approaches for the assessment of own funds requirements for operational risk, description	4.4, 7.7	446



	of methodology, discussion of internal and external factors considered		
Remuneration Policy	Decision-making process, number of meetings held, composition and mandate of a remuneration committee	8.1, 8.2	450(a)
	Link between pay and performance	8.1, 8.2	450(b)
	Important design characteristics of the remuneration system, including information on the criteria used for performance measurement and risk adjustment, deferral policy and vesting criteria	8.1, 8.2	450(c)
	Ratios between fixed and variable remuneration	8.3	450(d)
	Performance criteria on which the entitlement to shares, options or variable components of remuneration is based	8.1, 8.2	450(e)
	Main parameters and rationale for any variable component scheme	8.3	450(f)
	Aggregate quantitative information on remuneration, by business area	N/A	450(g)
	Aggregate quantitative information on remuneration, broken down by senior management and members of staff	8	450(h)
	Amount of remuneration split into fixed and variable, and number of beneficiaries	8	450(h)(i)
	Amounts and forms of variable remuneration, split into cash, shares, share-linked instruments and other types	8	450(h)(ii)
Amounts of outstanding deferred remuneration, split into vested and unvested portions	N/A	450(h)(iii)	
Amounts of deferred remuneration awarded paid out and reduced through performance adjustments	N/A	450(h)(iv)	

	New sign-on and severance payments made and the number of beneficiaries of such payments	N/A	450(h)(v)
	Amounts of severance payments awarded, number of beneficiaries and highest award to a single person	N/A	450(h)(vi)
	Number of individuals being remunerated EUR 1 million or more, broken down by pay bands	N/A	450(i)
	Upon demand from Member State of competent authority, the total remuneration for each member of the management body or senior management	N/A	450(j)
Leverage	Leverage ratio	9.1	451(1)(a)
	Breakdown and reconciliation of exposure measure	9.2	451(1)(b)
	Amount of derecognised fiduciary items	N/A	451(1)(c)
	Description of the processes used to manage risk of excessive leverage	9.2	451(1)(d)
	Description of factors that had an impact on the leverage ratio	9.2	451(1)(e)
	Implementation standards	9.2	451(2)
Disclosure of own funds	Application of this Article during the period from 1 January 2014 to 31 December 2021	6	492(1)
	The extent to which the level of Common Equity Tier 1 capital and Tier 1 capital exceed the requirements	4.2	492(2)
	Nature and effect on Common Equity Tier 1 capital, Additional Tier 1 capital, Tier 2 capital and own funds of the individual filters and deductions	6	492(3)(a)
	Amounts of minority interests and Additional Tier 1 and Tier 2 instruments, and related retained earnings and share premium	N/A	492(3)(b)

accounts, issued by subsidiaries that are included in consolidated Common Equity Tier 1 capital, Additional Tier 1 capital, Tier 2 capital and own funds			
Effect on Common Equity Tier 1 capital, Additional Tier 1 capital, Tier 2 capital and own funds of the individual filters and deductions applied	6		492(3)(c)
Nature and amount of items that qualify as Common Equity Tier 1 items, Tier 1 items and Tier 2 items by virtue of applying the derogations specified	N/A		492(3)(d)
Amount of instruments that qualify as Common Equity Tier 1 instruments, Additional Tier 1 instruments and Tier 2 instruments	6		492(4)
Implementation standards	6		492(5)

#### Disclosures Not Applicable

Non-material, Proprietary or Confidential Information	-	N/A	432
Exposure to counterparty credit risk	-	N/A	439
Capital Buffers	-	N/A	440
Indicators of Global Systemic Importance	-	N/A	441
Unencumbered Asset	-	N/A	443
Use of External Credit Assessment Institution	-	N/A	444
Exposures in equities not	-	N/A	447

included in the trading book			
Exposure to interest rate risk on positions not included in the trading book	-	N/A	448
Exposure to securitisation positions	-	N/A	449
Use of the IRB Approach to credit risk	-	N/A	452
Use of Credit Risk Mitigation Techniques	-	N/A	453
Use of the Advances Measurement Approaches to Operational Risk	-	N/A	454
Use of Internal Market Risk Models	-	N/A	455

# 1. INTRODUCTION

The transposition of the Basel III framework into European law was done in two parts: publication of the Capital Requirements Directive IV (“CRD IV” / “Directive 2013/36/EU”) and the Capital Requirements Regulation (“CRR” / “Regulation (EU) No. 575/2013”). Both the Directive and the Regulation are applicable since 1 January 2014.

Binary Investments (Europe) Limited (C 70156) (the “Company”), is registered in Malta, licensed and regulated by the Malta Financial Services Authority (“MFSA”) as a Category 3 Investment Services provider, under the Investment Services Act (Cap. 370, Laws of Malta).

This document is prepared in accordance with the above-mentioned Directive and Regulation.

## 2. SCOPE OF APPLICATION

The Company is required to publicly disclose Pillar 3 Disclosures once a year at a minimum. Policies related to the following have been established by the Company and is effective as of 31 December 2017:

- Compliance of disclosure requirements per Part Eight of Regulation (EU) No. 575/2013;
- Diversity of the Board of Directors; and
- Recruitment of the Board of Directors.

The Company has no subsidiary and is making the disclosures on an individual basis.

This document is only applicable to clients contracted directly with the Company. It does not apply to clients contracted with any of the other subsidiaries belonging to Binary Limited group of companies.

### 3. REPORTING LOCATION

The Company, a private limited liability company, is incorporated and domiciled in Malta. The address of the Company's registered office is Mompalao Building, Suite 2, Tower Road, Msida MSD 1825, Malta.

The Company is a wholly-owned subsidiary of Binary Group Limited whose registered address is Kingston Chambers, PO Box 173, Sea Meadow House, Road Town, Tortola, British Virgin Islands, VG1110.

This document contains the disclosures and will be published on the website of the Company at [www.binary.com](http://www.binary.com).

## 4. CAPITAL ADEQUACY

### 4.1 Capital Adequacy Approach

The Company's capital management objectives are to:

- comply with the capital resources requirements required by the MFSA; and
- ensure its ability to continue as a going concern and to provide an adequate return to shareholders and benefits to other stakeholders by pricing services commensurately with the level of risk and maintaining an optimal capital structure to reduce the cost of capital.

The Company's capital adequacy is actively managed by periodic monitoring of capital ratios.

In accordance with Article 2 (1) of Commission Recommendation 2003/361/EC, the Company is categorised as a small or medium-sized enterprise.

### 4.2 Regulatory Capital Ratios

Regulatory capital ratios calculated using elements of own funds are disclosed as follows:

Table 2. Regulatory capital ratios

	2017	2016
	%	%
Common equity Tier 1	61.37	78.58
Tier 1 capital	61.37	78.58
Total capital	88.03	78.58



### 4.3 Return on Assets

Return on assets are disclosed as follows:

Table 3. Return on assets

	2017	2016
	%	%
Return on total assets	1.34	-3.85
Return on net assets	4.00	-9.03

### 4.4 Risk Weighted Assets

Risk weighted assets and their minimum capital requirements are as follows:

Table 4. Risk weighted assets and minimum capital requirements for credit/counterparty risk, foreign exchange risk, and operational risk

31 December 2017

Risk Components	Risk Weighted Assets	Minimum Capital Requirements
	US\$	US\$
Credit/Counterparty Risk	682,176	54,574
Foreign Exchange Risk	392,067	31,365
Operational Risk	105,247	8,420
Total	1,179,490	94,359

31 December 2016

Risk Components	Risk Weighted Assets	Minimum Capital Requirements
	US\$	US\$
Credit/Counterparty Risk	433,008	34,641
Foreign Exchange Risk	289,868	23,189
Operational Risk	299,370	23,950
Total	1,022,246	81,780

## 5. RISK MANAGEMENT OBJECTIVES AND POLICIES

### 5.1 Risk Management Strategy

The development and implementation of the Company's strategic objectives depend on the Company's capability and risk management strategy. As such, risk management forms one of the core foundation of the Company's strategic objectives.

The primary elements of the Company's risk management strategy are its:

- risk management policy
- risk management processes and objectives;
- general conduct of business;
- risk statement;
- overall risk tolerance limits; and
- governance arrangement.

### 5.2 Risk Management Policy

Risk management is an integral part of the management of the Company's operations and is carried out internally using policies defined by the Board of Directors ("the Board"). Such policies define the categories of risk and specify the procedures and operating limits for each type of transaction and/or instrument and the choice of markets to enter. In accordance with these policies, the Company uses a prudent approach into offering its services.

The policy is reviewed regularly and annually to reflect changes in market conditions and the Company's activities. The Head of Risk/Director oversees the adequacy and functioning of the entire system of risk management and internal control with the Boards' oversight.

### 5.3 Risk Management Processes and Objectives

The Company has in place a risk management process, coordinated by the Head of Risk/Director, to identify the risks to which the Company is or could be exposed, and to manage those risks.

The Company is exposed to various risks which depend on the specific objectives being performed while fulfilling the Company's business. The Company's objective is to identify the risks and determine if they may be avoided, reduced, spread, transferred or prevented. Having recognised the need and the responsibility to preserve the Company's resources, the following guidelines are followed in managing the risks the Company may encounter:

- achieve and maintain a reduced cost of risk without placing the Company in a position of risk exposure that could have a significant impact on its financial security;
- evaluate and assess all risks of loss from the services it provides;
- reduce or eliminate identifiable conditions and practices which may cause loss whenever possible; and
- maintain a risk register which includes a description of each risk, risk categorization, and risk mitigation factors.

## **5.4 General Conduct of Business**

The Company conducts its operations in a manner that avoids unnecessary excessive risks and that assumes an acceptable level of risk which is integral to the day-to-day running of the business.

The Company's Board and senior management team acts in a prudent and diligent manner to safeguard its reputation. Risks that arise due to the nature of the Company's business operations are minimised through a prudent and diligent conduct of business, and in accordance with its risk appetite and risk profile.

Risks are minimised through adherence to the Company's own internal control systems and procedures. Adherence to applicable laws, regulations, directive and guidelines issued by MFSA and European Union is overseen by the Board.

The Company adopts a positive and proactive approach to managing these risks and maintains capital levels that exceed the minimum regulatory requirements.

Furthermore, the Board and senior management team of the Company acknowledge that proper conduct of business not only safeguards against adverse reputational consequences to the Company but also helps to protect the reputation of its peers and the industry.

## **5.5 Board Declaration – Adequacy of Risk Management Arrangements**

The Board acknowledges that the senior management team has taken reasonable steps to establish and maintain risk management policies, processes, and day-to-day application that are appropriate to the business nature of the Company.

## **5.6 Concise Risk Statement**

The Company adopts a conservative risk appetite. The risk appetite and acceptable risk level is cascaded to the key risk components of the Company.

## **5.7 Governance Arrangement**

### **5.7.1 Governance and Oversight**

The Board is committed to meeting high standards of corporate governance and strives to uphold its own highest standards of corporate governance as a private limited company by monitoring the developments in corporate governance standards within the industry and the region.

The Board's roles, powers, duties and functions are established based on the following guiding principles:

- Be responsible for the Company's leadership and provision of strategic direction and oversight;
- Monitor and periodically assess the effectiveness of the Company's governance arrangements;

- Approve and oversee the development and implementation of the Company’s strategic objectives, risk strategy and internal governance;
- Ensure integrity of accounting and financial reporting procedures;
- Ensure adequacy and effectiveness of risk management and internal control functions; and
- Ensure compliance with relevant rules, laws, regulations and relevant standards;

Roles and responsibilities of members of the Board:

- Maintain a sufficiently good repute and possess sufficient collective knowledge, skills, and experience;
- Consider and approve frameworks, policies, and procedures;
- Devote adequate human and financial resources to the training of employees and members of the Board;
- Assess and consider acceptable risk tolerance level;
- Determine dividend policy and amount;
- Consider and approve implementation of appropriate corporate governance arrangements;
- Monitor adequacy and effectiveness of controls and address deficiencies
- Act with honesty, integrity and independence of mind; and
- Oversee and monitor decision-making process.

### 5.7.2 Members of the Board of Directors

The Board is comprised of three executive directors and one non-executive director. During the financial year ended 31 December 2017, the directors in office and their directorships:

- within Binary Group of companies (internal); and
- outside of Binary Group of companies (external).

Members of the Board		Internal	External
1	Jean-Yves Christian Sireau	16	7
2	Joanna Frendo	4	Nil
3	Derek Swift	2	Nil
4	David Mallia	1	Nil

### 5.7.3 Recruitment Policy of Members of the Board of Directors

The chairman and members of the board are responsible for reviewing the appropriate diversity in the context of board composition and perceived needs of the board at a particular point in time.

When a recruitment need arises, the board shall attempt to identify appropriate individuals as potential candidates. Consideration shall be based on skills, knowledge, expertise, qualification,

experience, characteristics, competency, financial soundness, and with due regard for the benefits of diversity on the board, in accordance with good governance practices and applicable law.

The candidates shall be screened, and shortlisted candidates shall be interviewed and assessed by the chairman and members of the board. The successful candidate shall be nominated for election to the board at the upcoming board meeting.

A candidate shall not be appointed or begin performing any director-related function which requires prior approval by the Malta Financial Services Authority (“MFSA”), until the MFSA has granted its approval.

The adequacy and appropriateness of this policy is assessed at least on an annual basis.

#### **5.7.4 Policy on Diversity of the Board of Directors**

Board diversity and individuality is valued and encouraged to provide a broader range of competence, skills and experiences to enhance the Company’s capabilities to deliver business results and manage risks.

With regards to selection of board composition, we are committed to embracing diversity to achieve our strategic objectives and to sustain our competitive advantage.

Differences in various important characteristics, such as educational and functional background, regional and industry experience, skills, opinions, personalities, gender, race, ethnicity, and other distinctions between directors shall be considered in determining board composition.

A well-balanced representation of the board enables efficient discharge of its duties and responsibilities, making use of all aspects of its diversity.

Board appointments shall be made taking into consideration the skills, experience, independence, competence, and knowledge which are essential to effectively promote the success of the Company.

Board members are subject to evaluation on an annual basis. Board member’s performance may be reviewed in accordance with the processes agreed by the board from time to time. The board is collectively responsible for the success of the Company.

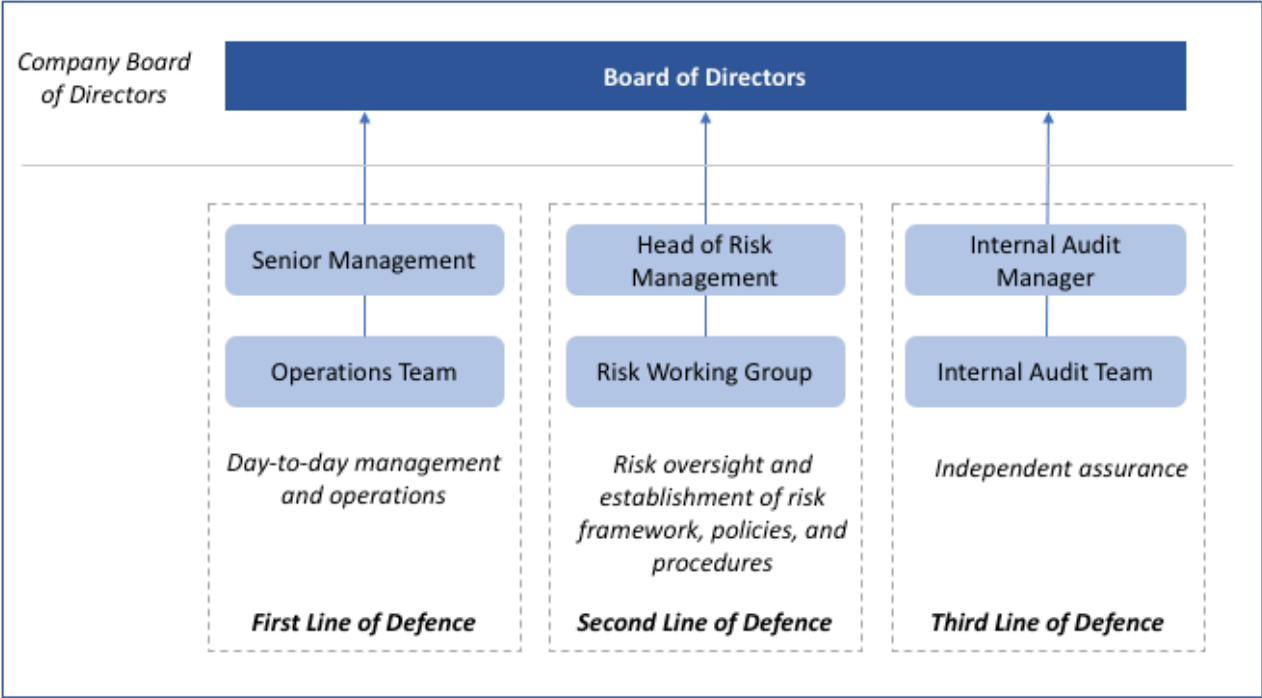
The adequacy and appropriateness of this policy is assessed at least on an annual basis.

#### **5.7.5 Risk Management Function**

Risk is an inherent component in all aspects of the Company’s business. The Company continuously promotes a culture of risk awareness and responsibility.

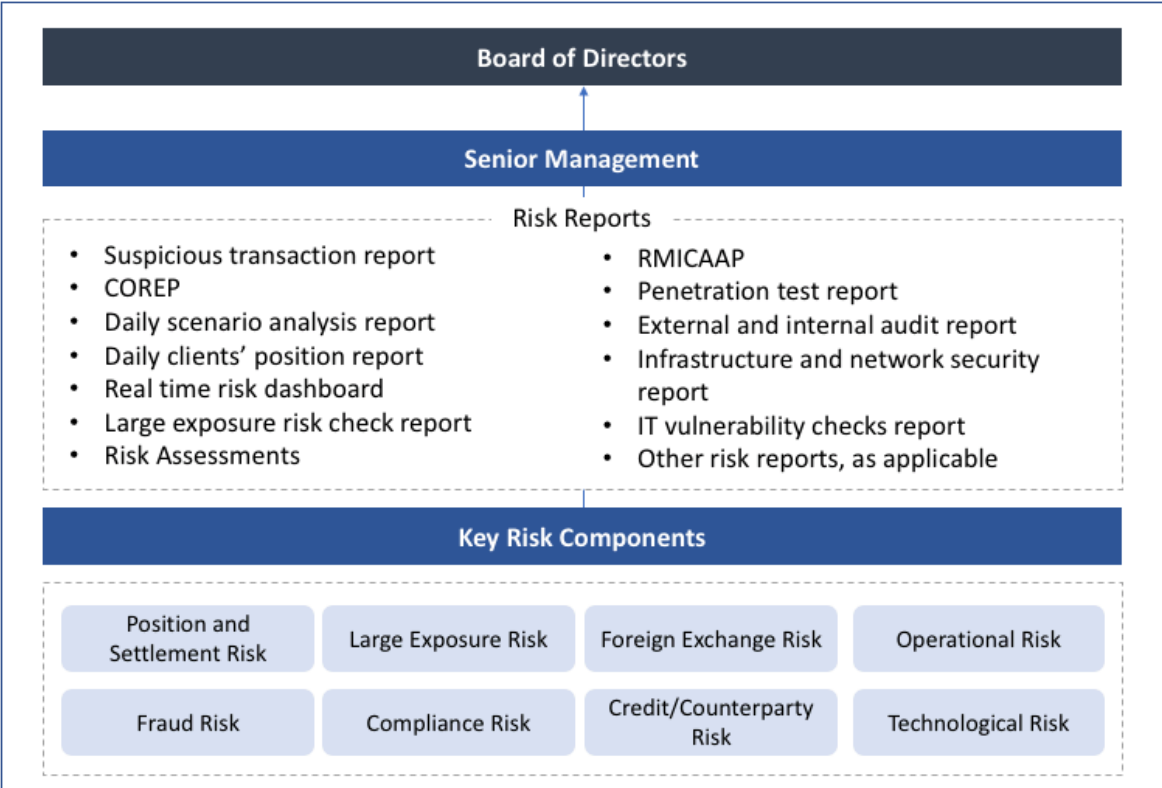
The following describes the structure and organisation of the Company’s risk management function:

Diagram 1. Structure and organisation of risk management function



The following describes the risk reporting flow of the Company:

Diagram 2. Risk information flow to the Board of Directors



### **5.7.6 Risk Management Working Group**

The Company has established Risk Management Working Group (RMWG) during the financial year ended 31 December 2017. The Group's risk management framework is designed to provide appropriate risk monitoring and assessment of the Company.

The Board is responsible in the establishment and overseeing the Group's risk management framework and internal control systems that are designed to manage the Group's risk assessment with the acceptable level of tolerance set by the Board. The Board periodically reviews the effectiveness and adequacy of the framework and systems by identifying, assessing, monitoring and communicating key business risks.

The RMWG shall meet on a quarterly basis unless otherwise determined by the group. Minutes of Group's meetings shall be kept and provided to the Board following the RMWG meeting. As of yet the Group met on one occasion on 23<sup>rd</sup> March 2018.

## 6. OWN FUNDS

The table below provides the disclosure of the Company's own funds structure:

Table 5. Regulatory capital

	2017	2016
	US\$	US\$
<b>Common equity Tier 1 Capital: instruments and reserves</b>	<b>842,996</b>	<b>803,259</b>
Capital instruments	1,000,000	1,000,000
Accumulated loss	(96,246)	(131,489)
<b>Other adjustments to CET 1:</b>	<b>(60,758)</b>	<b>(65,252)</b>
Other intangible assets	(3,700)	(3,700)
Deferred tax that rely on future probability and do not arise from temporary differences nor of associated tax liabilities	(57,058)	(61,552)
<b>Total CET 1</b>	<b>842,996</b>	<b>803,259</b>
<b>Tier 2 Capital</b>		
Paid up capital instruments and subordinated loans	195,288	-
<b>Total Capital (Own Funds)</b>	<b>1,038,284</b>	<b>803,259</b>
Risk weighted exposure amounts for credit/ counterparty risks	682,176	433,008
Total risk exposure amount for foreign exchange risk	392,067	289,868
Total risk exposure amount for operational risks	105,247	299,370
<b>Total risk exposure amount</b>	<b>1,179,490</b>	<b>1,022,246</b>



The full reconciliation of Common Equity Tier 1 items, Additional Tier 1 items, Tier 2 items and other filters and deductions applied to the own funds of the Company and the balance sheet in the audited financial statements is provided in the following table:

Table 6. Reconciliation of balance sheet to regulatory capital

	<b>Balance sheet in accordance with IFRS</b>	<b>Regulatory adjustments</b>	<b>Regulatory own funds</b>
	<b>2017</b>	<b>2017</b>	<b>2017</b>
	<b>US\$</b>	<b>US\$</b>	<b>US\$</b>
Ordinary share capital	1,000,000	-	1,000,000
Accumulated loss	(96,246)	-	(96,246)
Inadmissible assets - intangible assets	-	(3,700)	(3,700)
Deferred tax that rely on future profitability and do not arise from temporary differences	-	(57,058)	(57,058)
Investor compensation scheme	948	(948)	-
	<b>904,702</b>	<b>(61,706)</b>	<b>842,996</b>
	<b>2016</b>	<b>2016</b>	<b>2016</b>
	<b>US\$</b>	<b>US\$</b>	<b>US\$</b>
Ordinary share capital	1,000,000	-	1,000,000
Accumulated loss	(132,437)	-	(132,437)
Inadmissible assets – intangible assets	-	(3,700)	(3,700)
Deferred tax that rely on future profitability and do not arise from temporary differences	-	(61,552)	(61,552)
Investor compensation scheme	948	-	948
	<b>868,511</b>	<b>(65,252)</b>	<b>803,259</b>

The main features and terms and conditions of Tier 1 and Tier 2 instruments are disclosed in the table below:

Table 7. Terms and conditions of share equity

<b>Capital Instruments Main Features</b>	<b>Ordinary Share Capital</b>
Governing Law	Maltese Law
<b>Regulatory Treatment</b>	
Transitional CRR rules	Common Equity Tier 1
Post-transitional CRR rules	Common Equity Tier 1
Amount recognised in regulatory capital	US\$ 1,000,000
Nominal amount of instrument	US\$ 1,000,000
Issue price	US\$ 1
Accounting classification	Share equity
Original date of issuance	22 April 2015
Perpetual or dated	N/A
Original maturity date	N/A
Issuer call subject to prior supervisory approval	No
<b>Coupons/dividends</b>	
Fixed or floating dividend coupon	Floating
Coupon rate	N/A
Existence of dividend stopper	No
Fully discretionary, partially discretionary or mandatory	Fully discretionary
Existence of step up or other incentive to redeem	No
Non-cumulative or cumulative	Non-cumulative
Convertible or non-convertible	Non-convertible

Write-down features	No
Position in subordination hierarchy in liquidation	Subordinated to creditors
Non-compliant transitional features	No

Table 8. Terms and conditions of subordinated loan

<b>Capital Instruments Main Features</b>	<b>Subordinated Loan</b>
Issuer	Binary Ltd.
Governing Law	Maltese Law
<b>Regulatory Treatment</b>	
Transitional CRR rules	Tier 2 Capital
Post-transitional CRR rules	Not applicable
Instrument type	Subordinated Loan
Amount recognised in regulatory capital	US\$ 195,288
Nominal amount of instrument	US\$ 195,288
Accounting classification	Debt
Original date of issuance	11 November 2017
Perpetual or dated	Dated
Original maturity date	10 November 2022
Issuer call subject to prior supervisory approval	No
<b>Coupons/dividends</b>	
Fixed or floating dividend coupon	N/A
Coupon rate	N/A
Existence of dividend stopper	No
Fully discretionary, partially discretionary or mandatory	Fully discretionary

Existence of step up or other incentive to redeem	No
Non-cumulative or cumulative	N/A
Convertible or non-convertible	Non-convertible
Write-down features	No
Position in subordination hierarchy in liquidation	General debt
Non-compliant transitional features	No

## 7. RISK COMPONENTS

### 7.1 Credit/Counterparty Risk Components

The exposure classes applicable to the Company in respect of its credit/counterparty risk is comprised of:

Table 9. Credit/Counterparty exposure analysis by exposure class

31 December 2017

Exposure Classes	Total Exposure Value	Minimum Capital Requirements	Risk Weighted Exposure
	US\$	US\$	US\$
Central Government	(5,743)	(1,149)	(14,358)
Institutions	2,441,648	39,066	488,330
Corporates	194,827	15,586	194,827
Other Items	13,377	1,070	13,377
Total	2,644,109	54,573	682,176

31 December 2016

Exposure Classes	Total Exposure Value	Minimum Capital Requirements	Risk Weighted Exposure
	US\$	US\$	US\$
Central Government	9,249	1,850	23,123
Institutions	1,937,914	31,007	387,583
Corporates	8,413	673	8,413
Other Items	13,889	1,112	13,899
Total	1,969,465	34,642	433,008

The Company applies the Standardised Approach for the calculation of its Credit/Counterparty risk.

Credit/counterparty risk is the risk of incurring a financial loss on the assets, loans and receivables of the Company when a counterparty fails to meet the obligations towards the Company and includes concentration risk. Concentration risk is the risk arising from high exposures to a single counterparty or a group of connected counterparties.

The Company's exposure to central government is composed of the deferred tax asset arising from temporary differences.

Exposure to institutions comprised of cash and cash equivalents placed with financial institutions. The Company's counterparty for cash and cash equivalents are financial institutions of high quality external credit ratings assigned by international credit rating agencies. As such, the Board considers the credit risk for cash and cash equivalents to be low.

The Company's exposure to corporates include receivables from related companies within the Binary Group. Credit/Counterparty risk associated with these balances is considered to be low as these related companies are creditworthy counterparties.

Exposure to other items comprised of the Company's plant, equipment and prepayments. The Company maintains all reasonable controls to ensure that all physical assets are safeguarded against possible theft or other causes of damage or destruction. Such controls are in place to safeguard the Company's plant and equipment against all reasonable risks. The Company is insured against foreseeable financial losses arising from damage or theft.

## **7.2 Credit/Counterparty Risk Adjustment**

For the purpose of assessing impairment, assets are grouped at the lowest levels for which there are largely independent cash inflows (cash-generating units). As a result, some assets are tested individually for impairment and some are tested at cash-generating unit level.

All individual assets or cash-generating units are tested for impairment whenever events or changes in circumstances indicate that the carrying amount may not be recoverable.

The Company did not have any financial assets that are past due and impaired as at 31 December 2017. No specific and general credit risk adjustments were made to the Company's financial assets for the financial year ended 31 December 2017.

### **7.2.1 Exposures by average exposure amount over the period broken down by different type of exposure classes**

The table below outlines the Company's exposure by exposure class net of any specific provision:

Table 10. Average Credit/Counterparty exposure

31 December 2017

Exposure Classes	Total Exposure Value	Average Exposure Value
	US\$	US\$
Central Government	(5,743)	5,501
Institutions	2,441,648	2,198,435
Corporates	194,827	135,181
Other Items	13,377	19,708
Total	2,644,109	2,358,825

31 December 2016

Exposure Classes	Total Exposure Value	Average Exposure Value
	US\$	US\$
Central Government	9,249	48,179
Institutions	1,937,914	1,784,749
Corporates	8,413	22,946
Other Items	13,889	21,994
Total	1,969,465	1,877,867

### 7.2.2 Exposures post value adjustments by industry and exposure class

The table below outlines the Company's exposure by exposure class and industry area\* net of any specific provision:

Table 11. Industry analysis of Credit/Counterparty exposure

31 December 2017

Exposure Class	Financial Services	Real Estate	Public Administration	Arts and Entertainment	Others	Total
	US\$	US\$	US\$	US\$	US\$	US\$
Central Government	-	-	(5,743)	-	-	(5,743)
Institutions	2,441,648	-	-	-	-	2,441,648
Corporates	-	-	-	194,827	-	194,827
Other Items	-	5,356	-	-	8,021	13,377
<b>Total</b>	<b>2,441,648</b>	<b>5,356</b>	<b>(5,743)</b>	<b>194,827</b>	<b>8,021</b>	<b>2,644,109</b>

31 December 2016

Exposure Class	Financial Services	Real Estate	Public Administration	Arts and Entertainment	Others	Total
	US\$	US\$	US\$	US\$	US\$	US\$
Central Government	-	-	9,249	-	-	9,249
Institutions	1,937,914	-	-	-	-	1,937,914
Corporates	-	-	-	8,413	-	8,413
Other Items	-	1,951	-	-	11,938	13,889
<b>Total</b>	<b>1,937,914</b>	<b>1,951</b>	<b>9,249</b>	<b>8,413</b>	<b>11,938</b>	<b>1,969,465</b>

\* The Company uses the UK Standard Industrial Classification of Economic Activities 2007 for the above classification purpose



### 7.2.3 Exposures post value adjustments by significant geographic area and material exposure class

The table below outlines the Company's exposure by exposure class and geographic area net of any specific provision:

Table 12. Geographical analysis of Credit/Counterparty exposure

31 December 2017

Exposure Class	Malta	Germany	United Kingdom	Seychelles	Gibraltar	Others	Total
	US\$	US\$	US\$	US\$	US\$	US\$	US\$
Central Government	(5,743)	-	-	-	-	-	(5,743)
Institutions	2,150,126	124,436	74,155	-	61,545	31,387	2,441,649
Corporates	-	-	-	168,562	-	26,266	194,828
Other Items	13,377	-	-	-	-	-	13,377
<b>Total</b>	<b>2,157,760</b>	<b>124,436</b>	<b>74,155</b>	<b>168,562</b>	<b>61,545</b>	<b>57,653</b>	<b>2,644,111</b>

31 December 2016

Exposure Class	Malta	Germany	United Kingdom	Isle of Man	Seychelles	British Virgin Island	Total
	US\$	US\$	US\$	US\$	US\$	US\$	US\$
Central Government	9,249	-	-	-	-	-	9,249
Institutions	1,814,964	44,659	31,161	47,130	-	-	1,937,914
Corporates	2,327	-	-	-	5,839	247	8,413
Other Items	13,889	-	-	-	-	-	13,889

Total	1,840,429	44,659	31,161	47,130	5,839	247	1,969,465
-------	-----------	--------	--------	--------	-------	-----	-----------

## 7.2.4 Exposures post value adjustments by residual maturity and by material exposure class

The table below outlines the Company's exposure by exposure class and residual maturity net of any specific provision:

Table 13. Residual maturity analysis of Credit/Counterparty exposure

31 December 2017

Exposure Class	< 3 months	< 1 year	> 1 year	Total
	US\$	US\$	US\$	US\$
Central Government	-	-	(5,743)	(5,743)
Institutions	-	2,441,648	-	2,441,648
Corporates	-	194,827	-	194,827
Other Items	5,356	-	8,021	13,377
Total	5,356	2,636,475	2,278	2,644,109

31 December 2016

Exposure Class	< 3 months	< 1 year	> 1 year	Total
	US\$	US\$	US\$	US\$
Central Government	-	-	9,249	9,249
Institutions	-	1,937,914	-	1,937,914
Corporates	-	8,413	-	8,413
Other Items	1,951	-	11,938	13,889
Total	1,951	1,946,327	21,187	1,969,465

## **7.3 Market Risk Analysis**

### **7.3.1 Foreign Currency Risk**

The Company's revenue, purchases and operating expenditure are mainly denominated in euro and sterling pound. The Company has a short-term risk exposure for foreign currency risk on its cash and cash equivalents placed with financial institutions denominated in Australian Dollar, Euro and Sterling Pound.

The Head of Risk/Director monitors the Company's exposure to foreign currency risk on a continuous basis against acceptable thresholds.

The Company does not enter into any hedging positions to mitigate its exposure to foreign currency risk.

### **7.3.2 Interest Rate Risk**

The Company is not exposed to interest rate risk since it does not have any interest-bearing borrowings. Interest exposure on its financial assets bearing variable interest rates is not considered to be significant and the Company does not rely on it as a source of income.

## **7.4 Liquidity Risk**

The Company's exposure to liquidity risk arises from its obligations to meet its financial liabilities, comprised of derivative financial liabilities, trade payables, and other payables. Prudent liquidity risk management activities include maintaining sufficient cash balances to ensure the availability of an adequate amount of liquid funds to meet the Company's obligations when they become due.

The Company adopts systems and procedures to monitor and manage liquidity risk. The primary objective of these systems and procedures are to ensure that adequate levels of liquidity buffers are maintained.

Periodic reconciliations, reporting and cash management procedures are in place to manage the Company's liquidity.

The Company's liquidity risk is not deemed to be significant in view of the excess of net cash inflows arising from operating, financing and investment activities.

## **7.5 Large Exposure Risk Components**

Limits on large exposures are established to ensure that a company manages its exposure to counterparties within appropriate limits determined in accordance with its capital resources requirements.

The Company implements an automated control procedure by checking, limiting and reporting its large exposure risk whenever a contract is purchased.

The Company does not have any large exposures exceeding the calculated threshold percentage of own funds for the financial year ending 31 December 2017.

## **7.6 Commodities Risk Components**

Commodities risk refers to the risk of holding or taking positions in commodities such as physical products which are and can be traded in the secondary market. This includes commodity derivatives. It is the Company's policy not to hold any investments in commodities.

## **7.7 Operational Risk Components**

Operational risk represents the risk of loss resulting from inadequate or failed internal controls, or from external events, and this includes legal risk. The internal control system of the Company consists of systematically structured organisational and technical measures to secure and protect the Company's assets, prevent and report errors and irregularities and comply with laws and regulations. The Company's internal processes and procedures are continuously monitored and reviewed by the senior management team for efficiency and effectiveness purposes.

The Company adopts established International Financial Reporting Standards and implements adequate segregation of duties in place to avoid conflict of interests. Audit trails and logs are maintained in all systems and tools accessed and used by employees. Additionally, the Company adopts a "need-to-know" access control policy.

All employees and contracted telecommuters of the Company are vetted for their conduct, qualifications and experience prior to their engagement. Continuous education and training programme is provided to develop the necessary knowledge and skills required to carry out their job functions.

The Company's Operational Risk Exposure is calculated following the Basic Indicator Approach.

## **7.8 Credit Valuation Adjustment Risk**

Credit valuation adjustment ("CVA") refers to an adjustment to the mid-market valuation of the portfolio of transactions with a counterparty. That adjustment reflects the current market value of the credit risk of the counterparty to the entity but does not reflect the current market value of the credit risk of the entity to the counterparty.

The Company collects the total purchase price for each contract up front, at the time the client enters a contract. This purchase price is deducted from the client's account balance. The Company does not offer any form of loans or financing facilities to its clients. This means that for the entire duration of the contract, the client will not be liable for any additional funds. As such, the credit risk of the client is not an influencing factor in the ultimate outcome of a given client's contract. The Company's risk exposure to credit valuation adjustment is low.

## **7.9 Free Deliveries**

Free deliveries cater for the risk that the licence holder has either: (a) paid for free deliveries transactions in financial instruments which qualify as trading book business before receiving them; or (b) has delivered financial instruments which qualify as trading book business, sold in a free deliveries transaction, before receiving payment for them.

Free deliveries are not a concern for the Company with regards to the contracts within the trading book. The Company collects the total purchase price for each contract up front, at the time the client enters a contract. This purchase price is deducted from the client's account balance. As such, the risk that the clients will not pay for their transactions does not constitute a risk exposure to the Company and its bottom line.

## **7.10 Compliance Risk**

In accordance with the directors' report of the audited financial statements for the financial year ended 31 December 2017, there were no breaches of licence conditions or other regulatory requirements which were subject to administrative penalties or other regulatory sanctions. The risk of regulatory sanctions, financial loss, or adverse reputational impact due to failure to comply with financial reporting requirement set out by MFSA and International Financial Reporting Standards is low. All the necessary reports required by MFSA are filed on time and prepared with the utmost of diligence and care. The Directors consider the Company's reputation as one of its key success factors.

## **7.11 Insurance Covers**

The Company holds an insurance policy which provides coverage in respect of loss of money or loss or damage to any other asset or property belonging to the Company or which are in the care, custody or control of the Company of for which the Company is responsible. The policy is reviewed on an annual basis.

## **7.12 Trading Book Risk Components**

### **7.12.1 Position Risk**

Position risk is the risk of losses arising from movements in market prices, in on- and off-balance sheet investments in financial instruments which qualify as trading book business.

For measuring Position Risk on Derivatives, the Company uses the Scenario Approach (Scenario Matrix Analysis), as outlined in the Basel II Agreement, Bank for International Settlements, to mitigate and report its Position Risk.

Scenario Matrix Analysis is accomplished by specifying a fixed range of changes in the option portfolio's risk factors and calculating changes in the value of the option portfolio at various points over the grid.

### **7.12.2 Counterparty Credit Risk**

Counterparty Credit Risk ("CCR") represents the risk that the counterparty to a transaction could default before the final settlement of the transaction's cash flows.

CCR is not a concern for the Company with regards to the contracts within the trading book. The Company collects the total purchase price for each contract up front, at the time the client enters

a contract. This purchase price is deducted from the client's account balance. The Company does not offer any form of loans or financing facilities to its clients.

### **7.12.3 Settlement Risk**

Settlement risk is the risk that the Company's cash against documented transactions in financial instruments are unsettled after the delivery due date.

Settlement risk is negligible for the Company. The Company collects the total purchase price for each contract up front, at the time the client enters a contract. This purchase price is deducted from the client's account balance.

The Company will conduct settlements on the very same day that the contracts conditions are fulfilled by crediting pay outs to clients whose contracts are in the money. No additional funds will be exchanged between the Company and clients whose contracts are out of the money.

## 8. REMUNERATION POLICY AND PRACTICES

### 8.1 Remuneration Guiding Principles

The Board's remuneration structure is designed to achieve an appropriate balance between risk and reward. The current remuneration structure is based on two key principles, which are considered best practice in the human resources domain:

- Internal equity – Directors /employees who perform similar job functions with similar skill levels should earn similar amounts
- External competitiveness – Director /employee compensation package compares favourably with companies of similar industry, business nature, size, and geographical area.

Over time, remuneration reflects the director's /employee's value to the Company and is fair vis-à-vis other directors /employees within the Company.

### 8.2 Performance Appraisal

The Company's performance appraisal is based on a self-assessment system and is conducted twice a year. The appraisal focuses on the following areas:

- Skills
- Teamwork
- Work performance
- Personal traits

The three broad categories used as a general guideline for ratings of performance appraisal results:

- Exceeds expectation
- Meets expectation
- Below expectation

### 8.3 Directors' Remuneration

The Board represents the following:

- Amounts paid to Directors are fixed and any increase is based on the Company's performance as well as individual performance. Bonus is discretionary, and performance based.
- All payments are done in cash and no shares or share options are granted as part of the remuneration package.

Table 14. Remuneration analysis by senior management and members of staff

31 December 2017

	Executive Director	Non-executive Director	Total
	US\$	US\$	US\$
Fixed	88,873	6,807	95,680
Variable	42,500	-	42,500
Total	131,373	6,807	138,180
Number of beneficiaries	2	1	3

Table 15. Remuneration analysis by business area

31 December 2017

	Aggregate Remuneration
	US\$
Compliance	232,935
Customer Support	34,299
Marketing	23,491
Technical	57,548
Total	348,273

Remuneration analysis by business area excludes director's fee paid to Non-Executive Director of US\$ 6,807.



## 9. LEVERAGE

### 9.1 Leverage Ratios

Leverage ratio is calculated by dividing tier 1 capital by a defined measure of on-balance sheet assets. It measures the relationship between the capital resources of the organisation to its total assets.

Periodically, the Internal Capital Adequacy Assessment Process (ICAAP), which provides a view of the impact of severe and unexpected events on profits, risk weighted assets, capital and leverage, is carried out. Leverage ratio is monitored periodically.

For the purpose of Article 451 (CRR), leverage ratios calculated in accordance with Article 429 (CRR) are disclosed as follows:

Table 16. Leverage ratio

	2017	2016
	%	%
Leverage Ratio - using a fully phased-in definition of Tier 1	31.17	39.48
Leverage Ratio - using a transitional definition of Tier 1	31.17	39.48

### 9.2 Reconciliation of leverage ratio

The following table discloses the breakdown of leverage ratio exposure as well as the reconciliation of leverage ratio exposure with accounting assets in the balance sheet:

Table 17. Reconciliation of balance sheet to leverage ratio exposure

	2017	2016
	US\$	US\$
<b>Summary reconciliation of accounting assets and leverage ratio exposures:</b>		
Total assets as per published financial statements	2,704,874	2,034,717
<b>Total leverage ratio exposure</b>	<b>2,704,874</b>	<b>2,034,717</b>

	<b>2017</b>	<b>2016</b>
	<b>US\$</b>	<b>US\$</b>
<b>Leverage ratio common disclosure:</b>		
On-balance sheet items (excluding derivatives, SFTs and fiduciary assets, but including collateral)	2,644,116	1,969,465
(Asset amounts deducted in determining Tier 1 capital)	60,758	65,252
<b>Total on-balance sheet exposures (excluding derivatives, SFTs and fiduciary assets)</b>	<b>2,704,874</b>	<b>2,034,717</b>
<b>Tier 1 capital</b>	842,996	803,259
<b>Total leverage ratio exposures</b>	2,704,874	2,034,717
<b>Leverage ratio</b>	<b>31.17%</b>	<b>39.48%</b>
	<b>2017</b>	<b>2016</b>
	<b>US\$</b>	<b>US\$</b>
<b>Split-up of on balance sheet exposures (excluding derivatives, SFTs and exempted exposures)</b>		
Total on-balance sheet exposures (excluding derivatives, SFTs, and exempted exposures), of which:	<b>2,644,109</b>	<b>1,969,465</b>
Banking book exposures, of which:		
Institutions	2,441,648	1,937,914
Corporate	194,827	8,413
Other exposures (plant and equipment, deferred tax asset and prepayments)	7,634	23,138